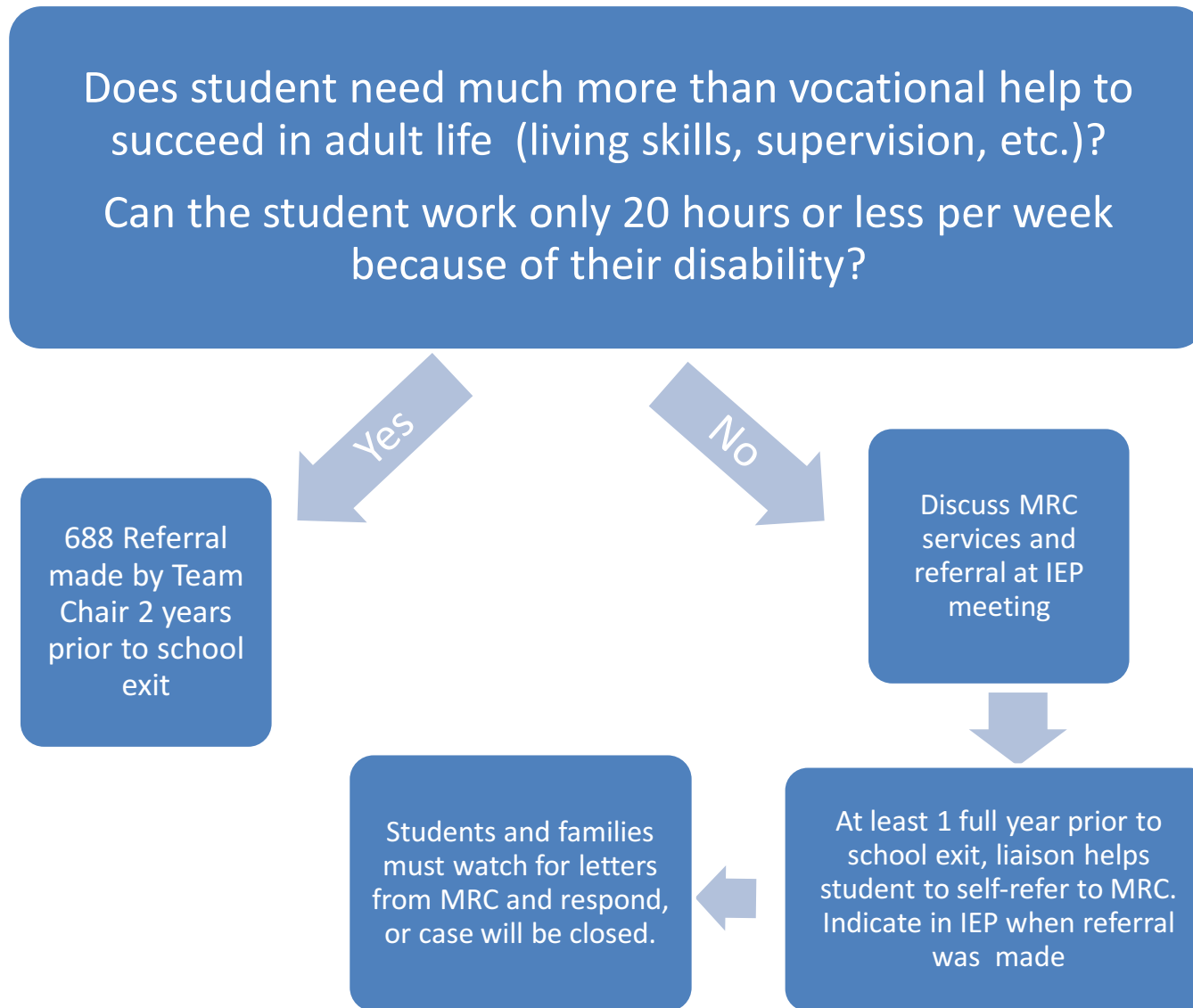


# Referrals to Adult Agencies

688 Referrals for: OOD students, some students in specialized programs, students involved with DCF, some students with ASD who have mod to significant functional deficits



1. Liaison reviews the attached MRC services info with student  
2. Get signed release from adult to share information with MRC  
3. Use MRC Student Referral Form to prepare student for call.

If unsure if your student is an exception, consult Team Chair