

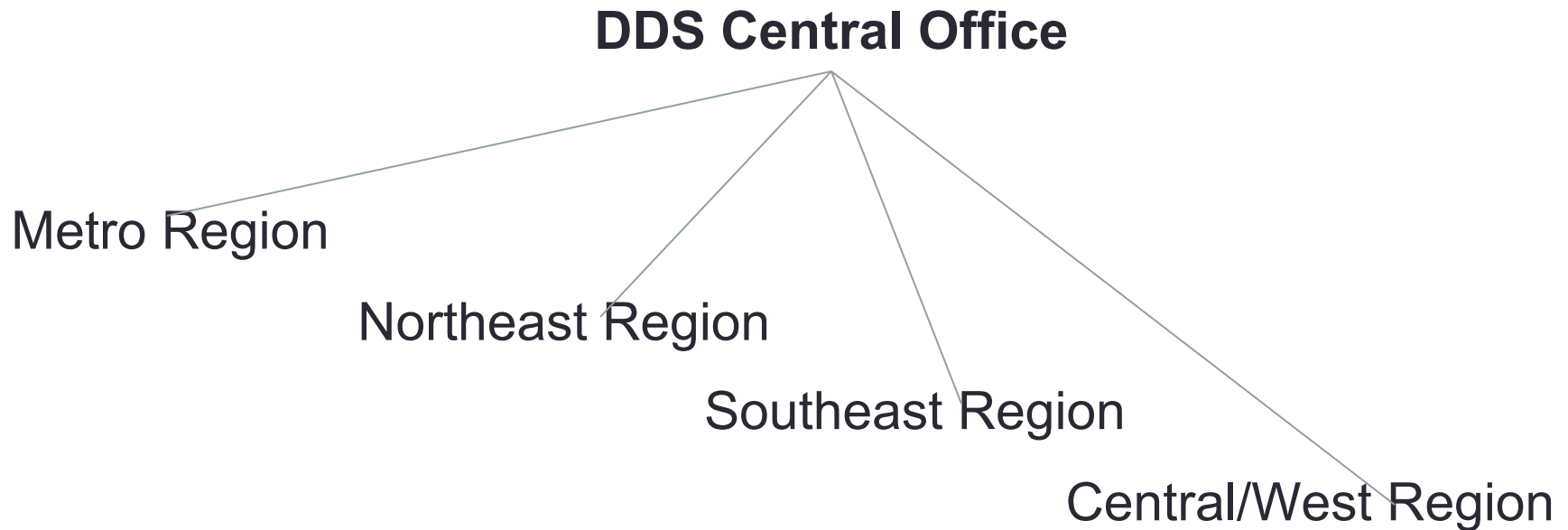


Massachusetts Department of Developmental Services

**King Philip High School
Virtual Transition Fair**

April 28, 2021

DDS Structure



- Statewide, there are more than 40,000 people eligible for DDS
- Over 8,000 individuals are eligible for DDS in Metro Region

DDS Metro Region

Metro Region Office

465 Waverley Oaks Road
Waltham, MA 02452
781-314-7500

Newton/South Norfolk Area Office

125 West Street
Walpole, MA
978-668-3679

Turning 22 & Chapter 688

Chapter 688 (also known as the "Turning 22" law) was enacted in 1983 to provide a two-year planning process for young adults that creates a single point of entry into the adult human service system.

688 Referrals

- A 688 referral guarantees:
 - A transitional agency
 - An ITP (Individualized Transition Plan)
- A 688 referral does not guarantee services.
- All DDS services are based on available funding.

DDS Adult Eligibility

In order to provide maximum planning time for adult services, it is best to begin the adult eligibility process around age 17.5

If a person is child eligible, they still need to complete the adult eligibility process; the criteria are different.

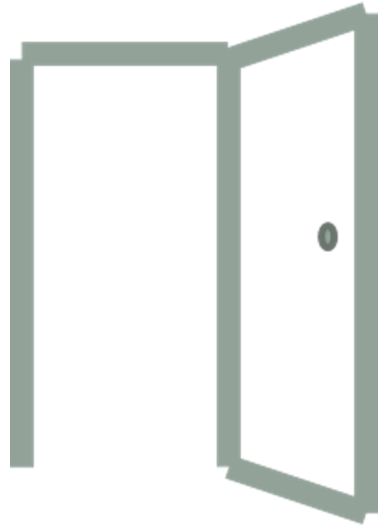
DDS eligibility and 688 eligibility are different processes, individuals need to go through both.

DDS Adult Eligibility

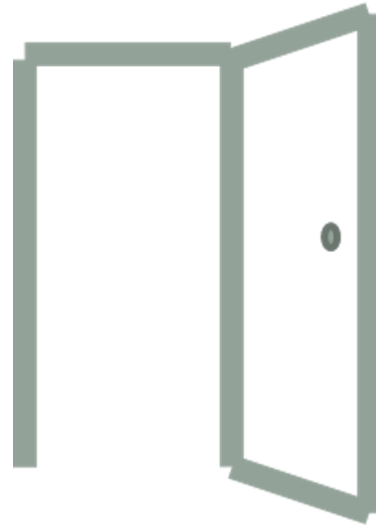
Individuals can be determined eligible for adult services through DDS if they have significant limitations in adaptive functioning and one or more of the following diagnoses:

- Intellectual Disability
- Autism Spectrum Disorder
- Prader-Willi Syndrome
- Smith-Magenis Syndrome

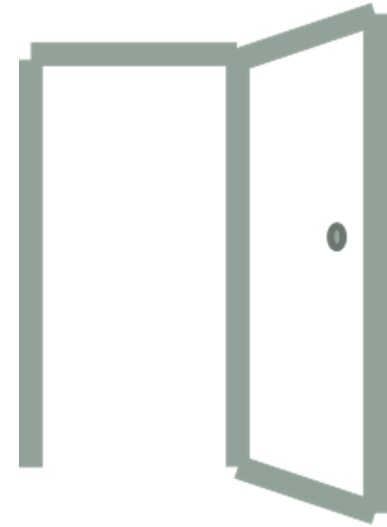
DDS Adult Eligibility



ID



ID/ASD



ASD

DDS Metro Region Office

Where to Apply:

DDS Metro Region
465 Waverley Oaks Road
Suite 120
Waltham, MA 02452
Intake Line:
(781) 314-7513

DDS applications can be found online at [**mass.gov/dds**](https://mass.gov/dds)

Lifeworks

- Family Support Program-
- Family Autism Center-
- Adult Autism Support Center-

Lifeworks

An Affiliate of The Arc

789 Clapboardtree Street

Westwood, MA 02090

781-762-4001

<https://lifeworksarc.org/>

Area Offices

Service Coordinators  **Your Primary Contact**

Service Coordinator Supervisors

Assistant Area Director

Area Director

The Role of Transition/ASD Coordinators

- Serve as the individual's primary DDS contact at this juncture
- Build a relationship with and get to know the transitioning student
- Work with individual around questions that arise
- Develop the ITP
- Frequency of contact increases as student gets closer to turning 22

What is an ITP?

The Individual Transition Plan (the document)

- The purpose of an ITP meeting is to develop a plan that includes the interests, skills and needs of the person.
- The ITP is the document that specifies what kinds of support the student needs upon leaving special education.
- The ITP does not contain specific goals and objectives, or identify specific provider agencies. The ITP functions as more of a “blueprint” of the student’s requested support needs.
- Supports identified in the ITP are not guaranteed and do not create an entitlement; they are subject to prioritization, appropriation and availability.

ITP

Individual Transition Plan (the meeting)

- Conducted by the Transition Coordinator
- The ITP does not need to be a separate meeting and often occurs during the IEP meeting since all parties of interest are already gathered.
- Ideally scheduled for 12-18 months prior to leaving school
- Student, family/guardian, school staff, and others who know the student well, are included
- Staff from other state agencies may be invited
- Services are subject to appropriation, availability, and prioritization
- There is only one ITP document.

DDS Service Delivery Models

Self Direction

- Participant Directed Program
- Agency With Choice

<https://www.mass.gov/doc/an-overview-of-self-determination-and-dds-service-models/download>

<https://www.mass.gov/dds-self-directed-services>

Traditional Services

Self-Direction Information Sessions

Please join us for an interactive discussion about expanding choices and control in your life through Self-Directed Supports.

This is an opportunity to hear how participants and their families can design individualized services to meet their needs through the Participant Directed Program or Agency with Choice.

5/11/21 10:00am to 11:30am

5/26/21 4:00pm to 5:30pm

6/8/21 10:00am to 11:30am

6/30/21 4:00pm to 5:30pm

To register please contact: jennifer.r.benoit@mass.gov

Offered via webex

DDS Supports

- Employment Supports
- Community Based Day Supports (CBDS)
- Family Support
- Individual Supports
- Autism Pre-Engagement/Coaching/College Navigation
- Self Direction
- Residential Supports
- Transportation
- Service Coordination

Contact Information

Kyle Goldman (she/her)

Supervisor

**Newton South Norfolk Area Office
125 West Street Walpole, MA 02081**

(781) 960-4123 (cell)

(508) 668-3679 x113

kyle.goldman@mass.gov

Contact Information

Maria Stefano

Autism Program Coordinator

Department of Developmental Services

Metro Region

465 Waverly Oaks Rd

Waltham, MA 02452

(781)314-7508

maria.Stefano@mass.gov

Helpful Links

DDS Home Page:

<https://www.mass.gov/orgs/departments-of-developmental-services>

DDS Application:

<https://www.mass.gov/lists/dds-eligibility-forms>

DDS Family Support:

<https://www.mass.gov/dds-family-support>

Important Transition Information Every Family Should Know:

<https://www.mass.gov/doc/transition-information-fact-sheets-english/download>

Essential DDS Transition Information:

<https://www.mass.gov/lists/essential-dds-transition-information>

DDS Self-Directed Services:

<https://www.mass.gov/dds-self-directed-services>

Helpful Links *continued*

Autism Commission:

<https://www.mass.gov/orgs/autism-commission>

The Autism Insurance Resource Center:

<https://massairc.org/>

Resource Guide for Transition Aged ASD Youth:

<https://www.mass.gov/lists/resource-guide-for-transition-aged-asd-youth>

DDS Statewide Family Support Directory

<https://www.mass.gov/dds-family-support>

Eligibility Fact Sheet for Adult Autism Spectrum Disorders:

<https://www.mass.gov/doc/eligibility-fact-sheet-for-adult-autism-spectrum-disorders/download>