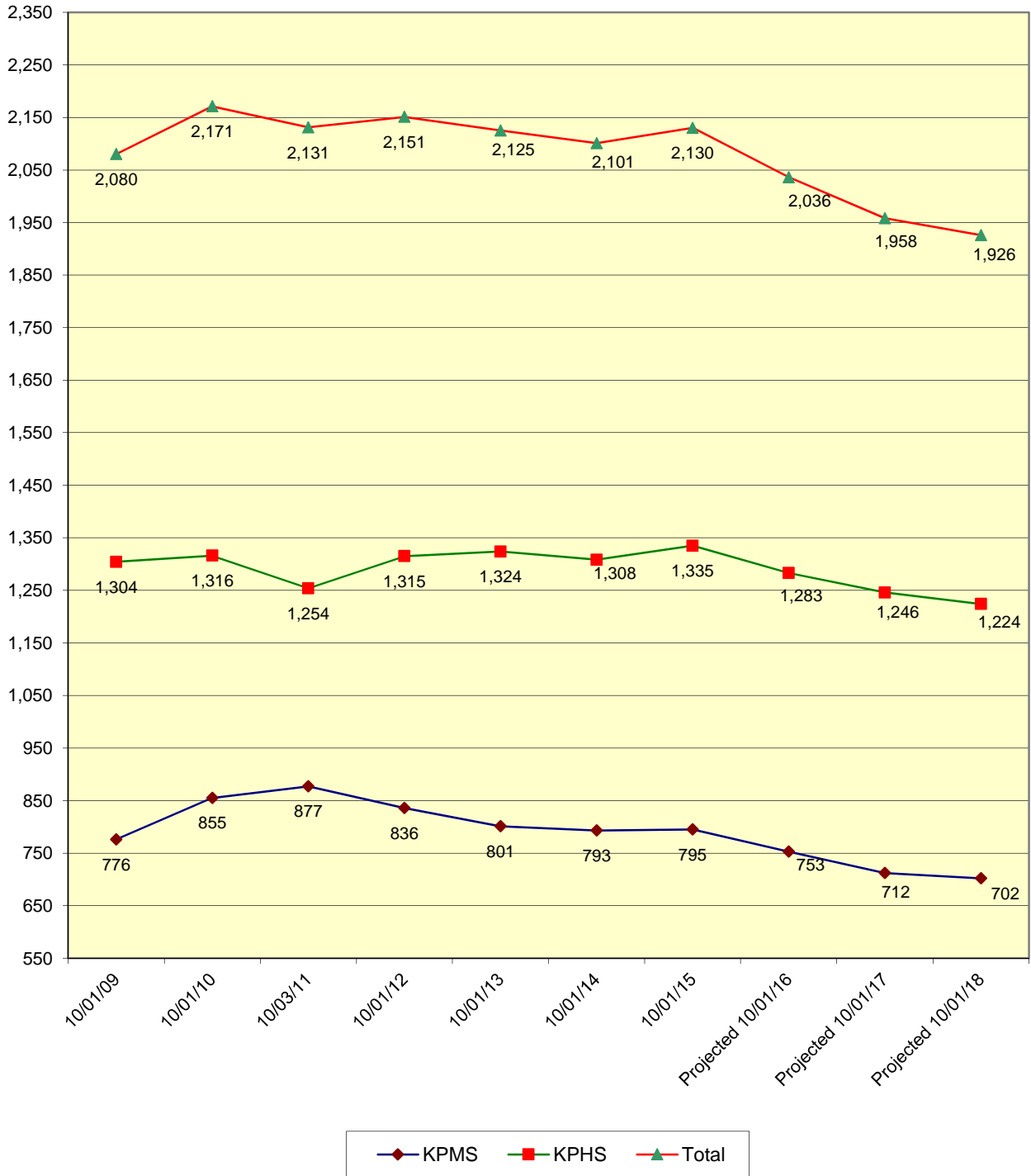


**Total In-District Student Population & 3 Year Projection**



**King Philip Regional School District**

**Business Office**

**Pupil Census / Projections:**

**FY 2017**

**In-District Students Only**

Actual Pupil Population								Projections: 3 Year Survival %			
Grade	2009	2010	2011	2012	2013	2014	2015	2016	2017	2018	

**Actual**

**Total Pupil Census**

K	385	357	390	323	369	296	321	329	315	322
1	378	399	357	364	316	368	324	319	327	313
2	444	369	401	361	382	325	380	327	320	329
3	399	438	370	384	351	374	342	377	324	317
4	421	399	440	406	396	347	386	340	375	322
5	430	423	400	404	391	395	349	393	346	381
6	463	432	428	407	440	381	399	343	386	341
<b>Elem</b>	<b>2,920</b>	<b>2,817</b>	<b>2,786</b>	<b>2,649</b>	<b>2,645</b>	<b>2,486</b>	<b>2,501</b>	<b>2,428</b>	<b>2,393</b>	<b>2,325</b>
Chg	-28	-103	-31	-137	-4	-159	15	-73	-35	-103

7	383	469	415	418	380	420	372	385	332	373
8	393	386	462	418	421	373	423	368	380	329
<b>KP-M</b>	<b>776</b>	<b>855</b>	<b>877</b>	<b>836</b>	<b>801</b>	<b>793</b>	<b>795</b>	<b>753</b>	<b>712</b>	<b>702</b>
Chg	-35	79	22	-41	-35	-8	2	-42	-41	-51

9	334	333	290	388	330	328	306	342	299	308
10	342	331	324	281	375	326	331	307	344	301
11	307	330	319	328	287	365	326	319	295	330
12	321	322	321	318	332	289	372	315	308	285
<b>KP-H</b>	<b>1,304</b>	<b>1,316</b>	<b>1,254</b>	<b>1,315</b>	<b>1324</b>	<b>1308</b>	<b>1335</b>	<b>1283</b>	<b>1246</b>	<b>1224</b>
Chg	30	12	-62	61	9	-16	27	-52	-37	-59

<b>Total KP</b>	<b>2,080</b>	<b>2,171</b>	<b>2,131</b>	<b>2,151</b>	<b>2125</b>	<b>2101</b>	<b>2130</b>	<b>2036</b>	<b>1958</b>	<b>1926</b>
Chg	-5	91	-40	20	-26	-24	29	-94	-78	-110